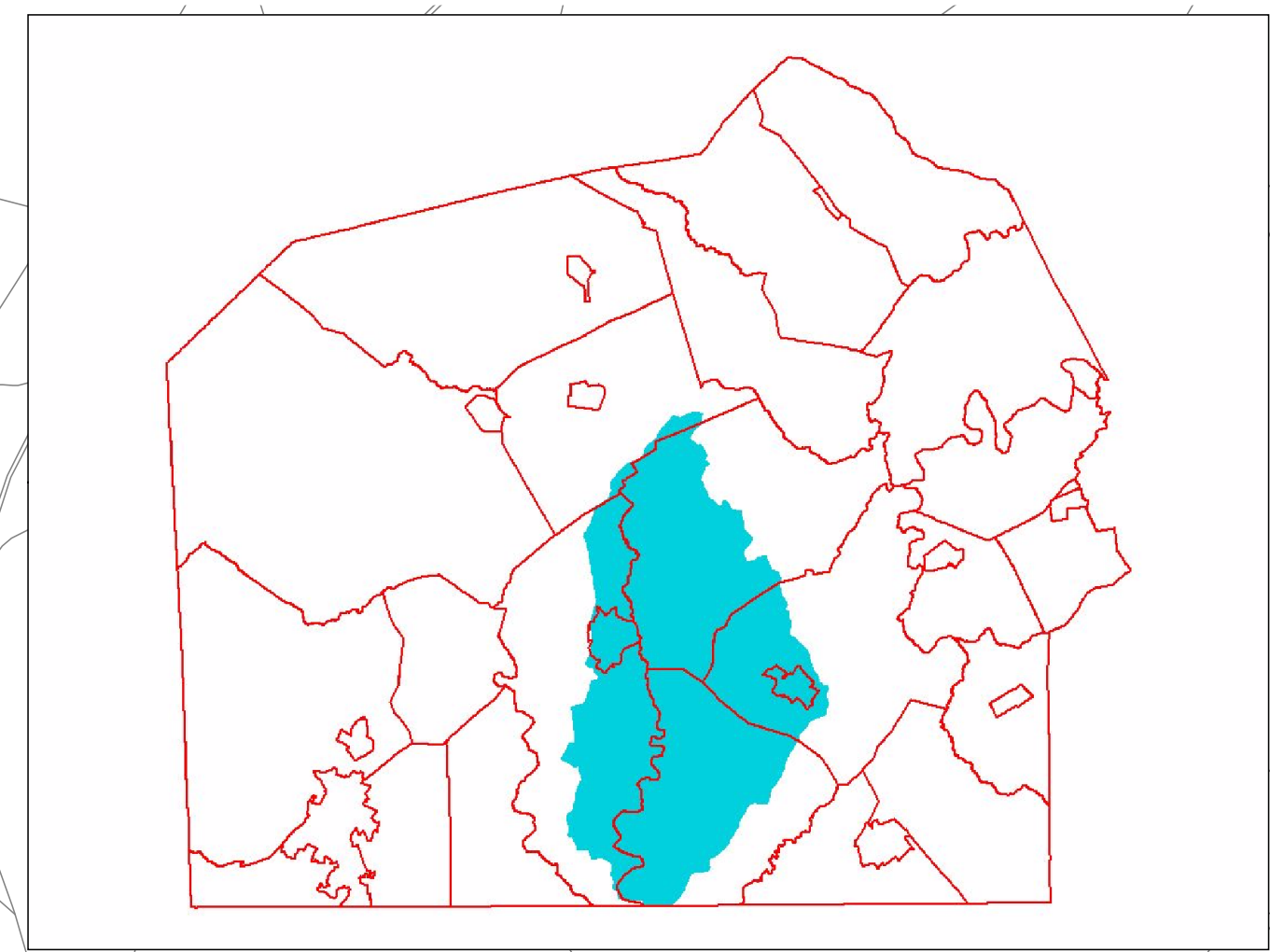


Drainage Capacities



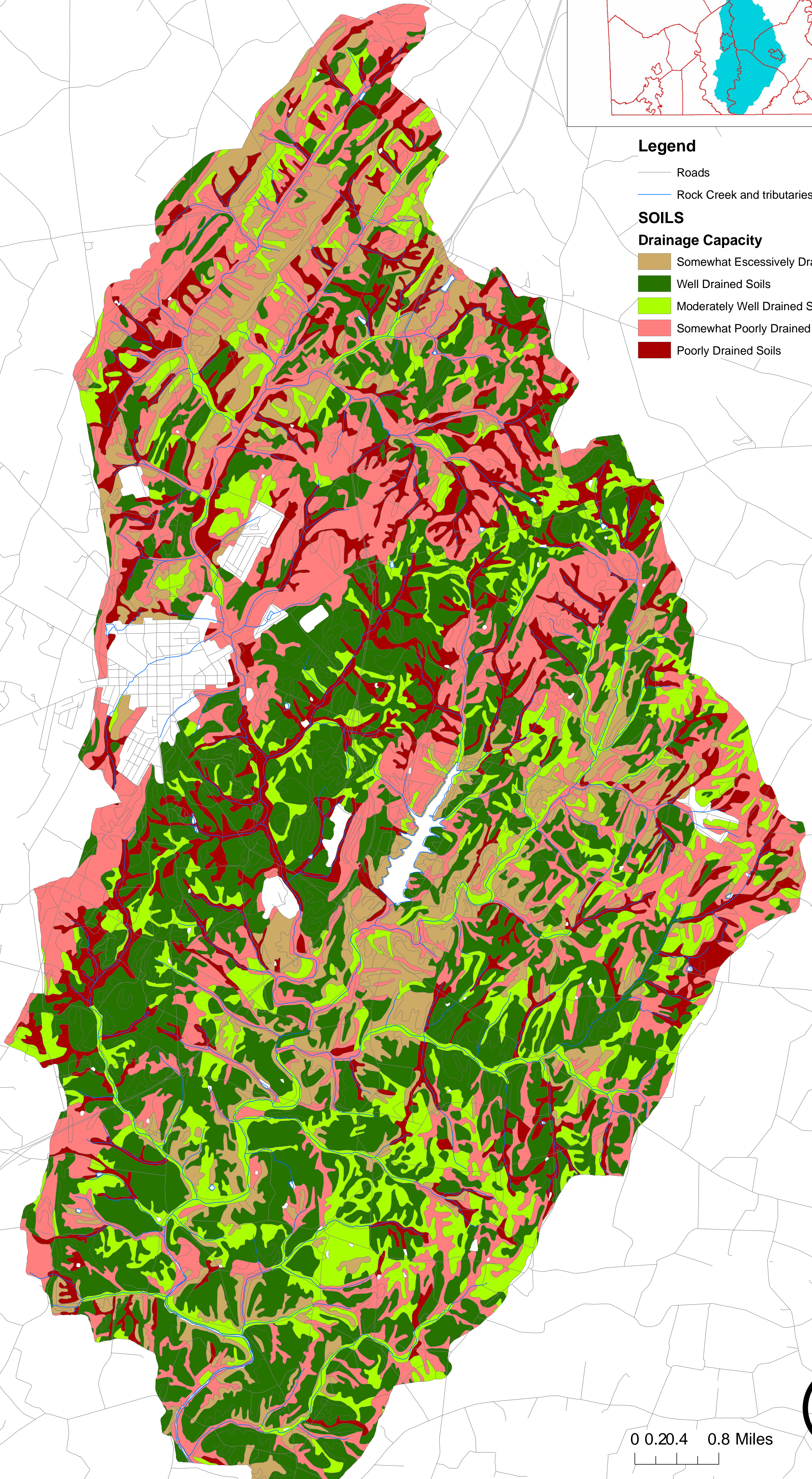
Legend

- Roads
- Rock Creek and tributaries

SOILS

Drainage Capacity

- Somewhat Excessively Drained Soils
- Well Drained Soils
- Moderately Well Drained Soils
- Somewhat Poorly Drained Soils
- Poorly Drained Soils



0 0.20.4 0.8 Miles

